

**Q. Can I print while using wireless?**

A. Printing is not available. If you need to print, please save your work to portable media (diskette, USB flash drive, CD, etc.) or e-mail the files to yourself, then login to a library workstation and send to a printer. CDs and diskettes are available for purchase for \$1 at the Check Out Desk.



**Q. Can the library help me configure my computer?**

A. Sorry, everyone's computer is different and you are responsible for knowing how to configure your own equipment. The library cannot be responsible for any changes you make to your computer's settings. If you need additional assistance, you may need to contact the manufacturer or supplier of your equipment.



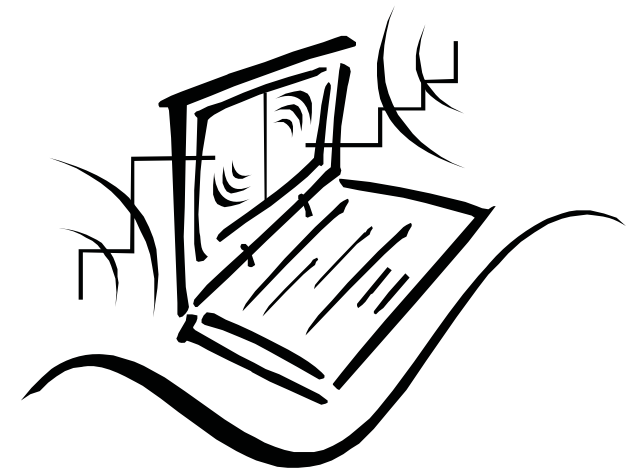
105 Perimeter Road  
Mount Horeb, WI 53572  
*ph. 608-437-5021*  
*fax 608-437-6264*

**M-Th 9:30-8:30 F 9:30-5:30**  
**Sat. 9:30-3:00 Sun. Closed**

Web: [www.mhpl.org](http://www.mhpl.org)  
E-mail: [mhpl@scls.lib.wi.us](mailto:mhpl@scls.lib.wi.us)  
Tele Circ: 608-261-9851

# Mount Horeb Public Library

## Wireless Internet Frequently Asked Questions





**Q. What is Wi-Fi?**

A. This free service at the Mount Horeb Public Library allows you to bring in your laptop computer with wireless card and surf the web using our high-speed Internet connection.

**Q. What do I need to access the wireless Internet at the Mount Horeb Public Library?**

A. A laptop computer, PDA or other device with a wireless network interface card. We also recommend a fully charged battery. While you are welcome to use the library's 110 volt outlets, the library does not accept any responsibility for loss of work or equipment failure due to power outages or surges. If you plan to use audio files, you will need to have headphones.

**Q. How can I use wireless Internet at the library?**

A. Most users can simply bring

their wireless-enabled computer or device to the library and turn it on. The computer will automatically recognize the wireless network. If your laptop does not have wireless built-in, you can install a Wi-Fi-compatible network card. The library cannot guarantee your equipment will work with the library's network.

**Q. How does it work?**

A. A wireless access point communicates with your wireless device. When your wireless network card senses a signal, a message appears on your screen indicating a wireless network is available.

**Q. Will I need any special settings or passwords to connect?**

A. You will be asked to register with a name, email and password when connecting to the library's wireless Internet connection. The registration process ensures greater security for you as the customer and provides the library with limited but needed and very generic statistics: the number of computers and the connect time.

**Q. Is my information safe while using wireless?**

A. Your information is not protected while using wireless, unless you are connected to a web

page that employs encryption (stores, banks, etc.) Keep this in mind if you are accessing sensitive business or personal information. Also, we suggest saving your work often, to prevent the loss of your work. In the event the network goes down unexpectedly, the library assumes no responsibility for your equipment, settings, files or data.

**Q. Are there any restrictions on my use of the Internet?**

A. Wireless users must read the library's Internet Use Policy - [www.mhpl.org/policies/internetuse.html](http://www.mhpl.org/policies/internetuse.html). The library's "Legal and Acceptable Use" statements apply.

**Q. Can I access the library's iPac catalog?**

A. All of the library's online resources including iPac are available on our website at [www.mhpl.org](http://www.mhpl.org)

